

## CONTACT US

[leduc-county.com](http://leduc-county.com) / [leduccountybusiness.com](http://leduccountybusiness.com) / [yoursayleduccounty.com](http://yoursayleduccounty.com)

 [leduccounty](https://www.facebook.com/leduccounty) /  [@leduccounty](https://twitter.com/leduccounty) /  [Leduc County](https://www.linkedin.com/company/leduc-county)

If you no longer want to receive a printed copy of the County Chronicle newsletter, email us at [communications@leduc-county.com](mailto:communications@leduc-county.com).

### DEPARTMENT CONTACT INFORMATION

#### Agricultural Services

780-955-4593

#### Engineering

780-979-6185

#### Planning and Development

780-979-2113

#### Assessment and Land Management Services

780-955-6412

#### FCSS

780-979-2385

#### Road Operations

780-979-6185

#### Corporate Services

780-770-9166

#### Finance

780-955-3555

#### Utilities

780-770-9040

#### County Manager's Office

780-979-2389

#### Fire Services

780-955-7099

#### After-hours road or water emergencies

780-955-7226

#### Enforcement Services

780-955-5005

#### Parks and Recreation

780-955-6410

### COUNCIL CONTACT INFORMATION

#### Division 1

##### Rick Smith

780-920-0671

#### Division 4

##### Larry Wanchuk

780-920-0674

#### Division 6

##### Glenn Beloner

780-920-0676

#### Division 2

##### Kelly-Lynn Lewis

780-920-0672

#### Division 5

##### Mayor Tanni Doblanko

780-920-0675

#### Division 7

##### Ray Scobie

780-920-0677

#### Division 3

##### Dal Virdi

780-920-0673

Return undeliverable items to:

101-1101 5 St.,

Nisku, AB T9E 2X3

phone: 780-955-3555

fax: 780-955-3444

**PM40858010**



**LEDUC  
COUNTY**

# CHRONICLE



**July 2025**



*Boat launch at Jubilee Park on Wizard Lake*

## IN THIS ISSUE

### Campgrounds

Check out one of our campgrounds for a summer getaway!

### Capital projects

Glen Park Road, Nisku  
Spine Road, New  
Sarepta Reservoir.

### 2025 election

The municipal election is on Oct. 20, 2025.

## NEW SAREPTA RESERVOIR EXPANSION

We're pleased to share the New Sarepta reservoir expansion project is well underway. Work completed so far includes:

- ▶ A new reservoir tank was installed to provide additional storage.
- ▶ A new heated concrete pad and overhead fill were installed for bulk water fills.
- ▶ A 40-horsepower pump with a variable-frequency drive was installed to improve pumping capacity and energy efficiency.
- ▶ Solar panels were installed on the roof to support sustainable energy use.

Other work is underway to replace the old diesel engine pump with a new, high-capacity electric pump and back-up diesel generator. Efforts also include the continuing installation of automation systems to improve the overall system performance.

**For more information, contact:**

- ▶ [lcutilities@leduc-county.com](mailto:lcutilities@leduc-county.com)
- ▶ **780-770-9040**

## Reminder – notice of public hearing

### 510 Local Area Structure Plan

We're hosting a public hearing for the 510 Local Area Structure Plan on **July 8, 2025, at 1:45 p.m.** You can provide feedback through a written submission or you can register to speak in-person or virtually:

- ▶ Written submissions – must be provided by **June 30, 2025, at 4:30 p.m.**
- ▶ In-person/ virtual presentations – must pre-register by **June 30, 2025, at 4:30 p.m.**

Full details can be found on our website: [yoursayleduccounty.com/township-road-510-lasp](https://yoursayleduccounty.com/township-road-510-lasp).

## CAPITAL PROJECTS — STATUS UPDATE

Three sections of **Glen Park Road** were recently under construction to complete various improvements. The sections included 5.3 km from Range Road 263 to Highway 795, 2.7 km from Range Road 251 to QEII and 11.1 km from Highway 778 to Highway 39.

The work completed includes:

- ▶ Removal of 50 mm of existing asphalt
- ▶ Placement of 65 mm of new asphalt
- ▶ Spot repairs
- ▶ Culvert replacements
- ▶ Minor intersection improvements and paving range roads



*Glen Park Road east of Range Road 13*

**Nisku Spine Road**, from Allard Avenue, Leduc, to Township Road 500 (65 Avenue, Leduc), was a joint cost-share project between the County and City of Leduc. Work was completed in 2024, which includes:

- ▶ New construction of 1.3 km of road (two lanes)
- ▶ Street light installation
- ▶ Drainage ditch and landscaping

**Learn more about road projects:**

- ▶ [leduc-county.com/road-projects](https://leduc-county.com/road-projects)
- ▶ [pwe@leduc-county.com](mailto:pwe@leduc-county.com)
- ▶ **780-979-6185**



*Nisku Spine Road*



## Summer camps

We offer creative and fun activities for various children and youth age groups. Register today:

- ▶ Lego Camp — Glen Park Hall, July 8 to 10
- ▶ Cooking Camp — Telford Community Hall, July 15 to 17
- ▶ Cooking Camp — Rolly View Community Hall, July 22 to 24
- ▶ Creator Camp — Cloverlawn Community Centre, July 29 to 31
- ▶ Creator Camp — Glen Park Hall, Aug. 5 to 7
- ▶ Amazing Race Camp — New Sarepta Agriplex, Aug. 12 to 14



Learn more about upcoming programs and events at [leduc-county.com/rec-programs-events](https://leduc-county.com/rec-programs-events).

### More information:

- ▶ [parksandrec@leduc-county.com](mailto:parksandrec@leduc-county.com)
- ▶ **780-955-6410**

## Recreation cost-share capital projects

Leduc County Council committed **\$400,000** in this year's budget to recreation cost-share capital projects with Beaumont, Calmar, Leduc, Thorsby and Warburg to help fund regional projects. Leduc County has a 35-year history investing in municipal partnerships to offer quality recreation amenities, enhanced services to residents and supporting facility upgrades.

Centre, Calmar arena, Thorsby sport fields, Ken Nichol Recreation Centre, Maclab Centre for the Performing Arts and the Leduc Recreation Centre. This also includes a grant to the Rolly View Community Association.

### For more information, contact:

- ▶ [parksandrec@leduc-county.com](mailto:parksandrec@leduc-county.com)
- ▶ **780-955-6410**

Some of the facilities include the Beaumont Sport and Recreation

## Leduc County Fire Services year-to-date response

There are six fire districts in the County that are served by Fire Services and our regional partners. We manage five districts — New Sarepta, Nisku, Calmar, Thorsby and Warburg — and provide funding to the Millet district.

So far in 2025, our crews have responded to **372** fire/rescue calls:



- |   |   |
|---|---|
|  <b>202</b> IN NISKU DISTRICT      |  <b>44</b> IN THORSBY DISTRICT |
|  <b>37</b> IN NEW SAREPTA DISTRICT |  <b>28</b> IN WARBURG DISTRICT |
|  <b>50</b> IN CALMAR DISTRICT      |  <b>11</b> IN MILLET DISTRICT  |

 Owned and operated by Leduc County

 Provide funding to

## July events in Leduc County

Here's what's going on in July:

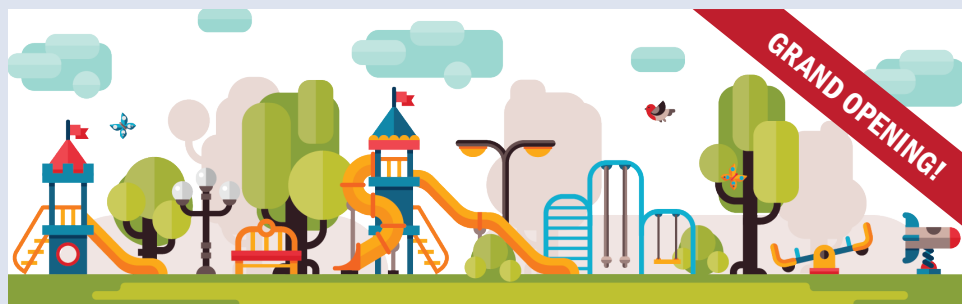
- ▶ Parks Day (July 12)
- ▶ Ice Cream Social – Cloverlawn (July 16)
- ▶ Activate/ Movie Youth day trip (July 28)
- ▶ Family Resource Network drop-in programming (Mondays in Devon, Tuesdays and Thursdays in Thorsby)

### PARK and PLAY events!

- ▶ New Sarepta on Thursdays (July 3 to Aug. 7)
- ▶ Warburg on Tuesdays (July 8 to Aug. 12)
- ▶ East Vistas on Thursdays (July 3 to Aug. 14)

Full details are posted on our online community calendar at [leduc-county.com/calendar](https://leduc-county.com/calendar).

## East Vistas Diamond Estates Park and playground



You're invited! Join us on **July 5** from **11 a.m. to 1 p.m.** to celebrate the grand opening of Diamond Estates Park and playground! The playground is located at **2715 - 59 Avenue northeast** (park near 59 Avenue NE and 30 Street NE in the East Vistas, south of Township Road 510 and west of Range Road 244).

The grand opening will feature:

- ▶ Ribbon-cutting ceremony
- ▶ Free ice cream
- ▶ Family fun zone

For more information, contact Parks and Recreation at **780-955-6410** or [parksandrec@leduc-county.com](mailto:parksandrec@leduc-county.com).

## Ever considered a 'staycation'?

Jubilee Park and Centennial Park campgrounds are great amenities located in Leduc County, and both are perfect choices for summer vacation plans! If you prefer group camping, check out Genesee Park and Sunnybrook Creek Park group campgrounds, which are designed for larger group getaways.

If camping isn't your thing, we also have beautiful day-use parks for hiking, fishing, picnics and more. Everything you need to know can be found on our website.



Centennial Park campground

### Plan your next adventure:

- ▶ [leduc-county.com/campgrounds](https://leduc-county.com/campgrounds)

- ▶ [parksandrec@leduc-county.com](mailto:parksandrec@leduc-county.com)
- ▶ **780-955-6410**

## 2025 Municipal Election

On **Oct. 20, 2025**, Leduc County residents will have the opportunity to vote for their next councillor, who will represent their division on Council for the next four years.

Potential candidates and voters are encouraged to visit [leduc-county.com/election](https://leduc-county.com/election) as their official source of election information.

### Candidates can learn about:

- ▶ The register of candidates — those who have filed a notice of intent to run in the municipal election.
- ▶ Running for municipal office and accessing important forms.
- ▶ Processes for becoming a candidate, filing a notice of intent and nominations.

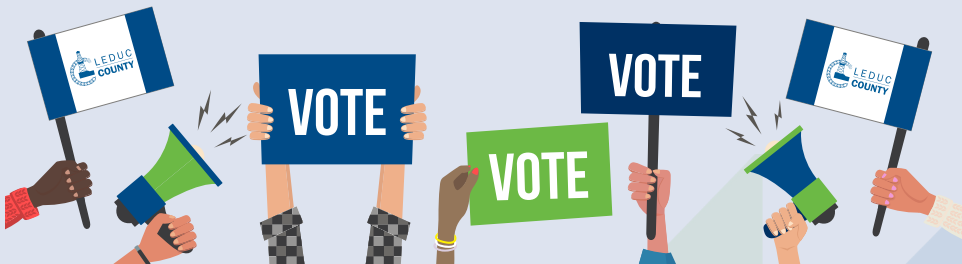
### Voters can learn about:

- ▶ Dates and locations for advance voting and election day.
- ▶ Voter eligibility and rules of residence,
- ▶ Getting added to the permanent electors register.
- ▶ Voter identification.

Our website is updated regularly to share important information for voters and potential candidates. Learn more at [leduc-county.com/election](https://leduc-county.com/election).

For more information, contact Lisa Brown, Returning Officer, at:

- ▶ [legservices@leduc-county.com](mailto:legservices@leduc-county.com)
- ▶ **780-770-9259**



**ELECTION 2025**

[leduc-county.com/election](https://leduc-county.com/election)