

CONTACT US

leduc-county.com / leduccountybusiness.com / yoursayleduccounty.com

[f](#) [leduccounty](#) / [@leduccounty](#) / [in](#) [Leduc County](#)

If you no longer want to receive a printed copy of the County Chronicle newsletter, email us at communications@leduc-county.com.

DEPARTMENT CONTACT INFORMATION

Agricultural Services

780-955-4593

Engineering

780-979-6185

Planning and Development

780-979-2113

Assessment and Land Management Services

780-955-6412

FCSS

780-979-2385

Road Operations

780-979-6185

Corporate Services

780-770-9166

Finance

780-955-3555

Utilities

780-770-9040

County Manager's Office

780-979-2389

Fire Services

780-955-7099

After-hours road or water emergencies

780-955-7226

Enforcement Services

780-955-5005

Parks and Recreation

780-955-6410

COUNCIL CONTACT INFORMATION

Division 1

Rick Smith

780-920-0671

Division 4

Larry Wanchuk

780-920-0674

Division 6

Glenn Beloner

780-920-0676

Division 2

Kelly-Lynn Lewis

780-920-0672

Division 5

Mayor Tanni Doblanko

780-920-0675

Division 7

Ray Scobie

780-920-0677

Division 3

Dal Virdi

780-920-0673

Return undeliverable items to:

101-1101 5 St.,

Nisku, AB T9E 2X3

phone: 780-955-3555

fax: 780-955-3444

PM40858010



**LEDUC
COUNTY**

CHRONICLE



April 2025



IN THIS ISSUE

Scavenger Hunt

Mark your calendars!
Our annual Scavenger
Hunt begins on April 1.

2025 budget

The 2025 final budget
will be presented to
Council on April 22.

Group campgrounds

Reserve a group
campground today!

PAGE 4

PAGE 3

PAGE 4

Debenture for capital road project

Borrowing Bylaw No. 06-25



Glen Park Road in Leduc County

The bylaw would authorize Leduc County Council to borrow funds in the amount of \$6,680,000 to finance the reconstruction of **Glen Park Road** between **Range Road 263** and **Highway 795**, between **Highway 778** and **Highway 39**, and between **Range Road 251** to **Highway 2**.

To complete this project, Leduc County must borrow up to \$6,680,000 for a term of up to 15 years from the Government of Alberta through a debenture, based on the terms and conditions referenced in the bylaw.

A Leduc County elector wishing to file a petition regarding the proposed bylaw must do so in compliance with Part 7 (Public Participation) of the *Municipal Government Act*. Petitions must be filed by **April 11, 2025**.

This borrowing bylaw will be presented to Leduc County Council for second and third reading at the regular Council meeting on **April 22, 2025** in the Council Chamber of County Centre, located at 101-1101 5 Street in Nisku. A copy of the proposed bylaw is available for review at County Centre from Monday to Friday between 8:30 a.m. and 4:30 p.m.; it can also be viewed online at leduc-county.com.

Questions regarding this notice or the proposed bylaw may be directed to:

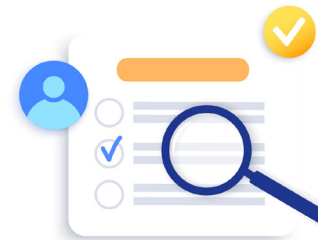
Finance department

County Centre: 101-1101 5 St., Nisku, AB, T9E 2X3

Phone: 780-955-3555

Fax: 780-955-8866

Bylaws under review webpage



Leduc County has a new webpage that shares details on proposed new bylaws and existing bylaws with proposed amendments as part of our legislative process as detailed in our alternate advertising bylaw.

While the County Chronicle newsletter will be utilized to share all legislated advertisements, such as advertisements for bylaws under review, resolutions and public hearings*, the new webpage was created so residents can easily access information about upcoming legislated items for Council's review.

Learn more at leduc-county.com/bylaws-under-review.

**All public hearings and other public participation opportunities are advertised on Leduc County's public participation website, yoursayleduccounty.com.*

2025 budget

County administration is presenting the 2025 final budget to Leduc County Council during the regular meeting on **April 22, 2025**. The meeting starts at 1:30 p.m. and can be viewed through a livestream on our website.



Visit leduc-county.com/council-meetings, go to 'April 22' and click on the livestream link listed for the April 22 meeting. Property tax and assessment notices will be mailed in mid-May as the payment deadline is **June 30, 2025**. Visit leduc-county.com/property-taxes for more detailed information.

Book a Leduc County group campground

Did you know Leduc County has two group campgrounds?

- **Genesee Park Group Campground** is perfect for a family reunion or a weekend getaway with friends. With amenities such as a large group site, gazebo and group firepit, it's the ideal place for your group camping plans.
- Nestled amongst the trees, **Sunnybrook Creek Park Group Campground** is an amazing place to get away with family and friends or to host a corporate event. It has a group firepit, shelter and much more to make your camping experience a perfect one.

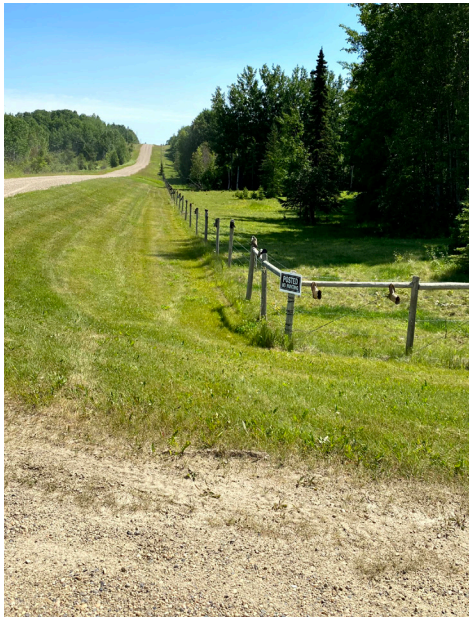
More information and booking:
leduc-county.com/campgrounds



Genesee Park Group Campground

Weed control

Every year, Leduc County works with residents to manage weeds on both public and private lands, as per the province's *Weed Control Act* and regulations. Under the Act, weeds declared as noxious or prohibited noxious must be controlled or eradicated.



Leduc County uses various control methods that include:

- Mowing roughly 4,000 acres of municipal roadside rights-of-way.
- Spraying selective herbicides in roadside ditches and along fence lines.

The act also states residents are responsible for controlling the spread of noxious weeds by mowing, cutting frequently or spraying. By using multiple control methods, together, we can limit the spread.

Learn more at leduc-county.com/weed-control.

The hunt is on!

Do you like clues and challenges? What about travelling within Leduc County and visiting new spots? If yes, then you're going to love the Leduc County Scavenger Hunt. Back by popular demand, the Scavenger Hunt is running from April 1 to 30 and residents are welcome to tour the County and participate for a chance to win great prizes.



Visit the link below for rules and to access the map. See you out there and good luck!

Learn more at leduc-county.com/scavenger-hunt.



April community events



Community events for the month of April include:

- Walking with Grief (every Wednesday)
- Family Resource Network drop-in programming (Mondays in Devon, Tuesdays and Thursdays in Thorsby)

Learn more at leduc-county.com/calendar.

Have your say on agricultural workshops

We're a proud agricultural community and we aim to offer workshops that are relevant and timely for our community.

Are you looking for specific topics and learning opportunities focused on agriculture? Interested in sustainable farming practices? Local food initiatives? Weed and pest control? We want to know!

Our Agricultural Services department is seeking feedback from local producers and residents.

Share your priorities for agricultural workshops through a survey from March 17 to April 25 at yoursayleduccounty.com.



Dust control program



The 2025 dust control program opens for applications on **April 1**. Residents can apply online or complete and submit a hard copy application form.

The application deadline is **May 15, 2025**. Please note: fees apply.

More information:

- leduc-county.com/dust-control
- pwe@leduc-county.com
- **780-979-6185**

This program is subsidized and available to County residents who live beside a gravel road. The County offers two products for dust control: calcium chloride and incorporated petroleum.

Housekeeping subsidy

Independence and quality of life are important as we age. One of the ways Leduc County provides support is by helping seniors and adults with disabilities access housekeeping services through our subsidy program. Through the housekeeping subsidy, people can receive up to four hours of services each month, which can include wiping kitchen surfaces, washing dishes, cleaning bathrooms, vacuuming, dusting and more.



More information:

- leduc-county.com/housekeeping
- **780-955-4554**

Seasonal road bans in Leduc County



Road bans

Each spring, Leduc County implements seasonal road bans to protect road infrastructure. Road bans are weight restrictions that reduce the maximum weight allowed on roads. This means large vehicles must reduce their weight when travelling on County roads.

If you need to haul material or equipment in excess of road bans,

you must apply for an overweight permit. Please note, free exemption permits are available for agricultural producers who need to haul during road ban season.

Learn more about road bans, overweight permits and current bans at leduc-county.com/road-bans.