

# Order No. 181

## Defining the maximum allowable weights permitted on local roads

Pursuant to the authority granted under the provisions of Bylaw No. 08-22 Traffic Bylaw, the County Manager orders that effective **8:00 a.m., May 28, 2025** the following maximum allowable weights will be permitted on local roads in Leduc County:

### Description

### PERCENTAGE-AXLE WEIGHTS

#### Gravel Roads

Range Road 32 south of Highway 616 to the county boundary	75%
Range Road 33 south of Highway 616 to the county boundary	75%
Township Road 474 between Range Road 32 and Range Road 33	75%
All roads within hamlets	75%
All local gravel surfaced roads	100%
All roads within Nisku Business Park	100%

#### Surfaced Roads

All internal subdivision roads	75%
All roads within hamlets (including New Sarepta and Looma with the exceptions listed below)	75%
Other surfaced roads as per the following:	
• Township Road 503 from Joseph Lake Main Road (Range Road 221) east to Wildland Meadows	75%
• Township Road 500 from Joseph Lake Road (Range Road 221) to the Hamlet of New Sarepta	75%
• Range Road 222 from Looking Back Lake Main Road (Township Road 504) to Township Road 510	75%
• Range Road 231 from Township Road 500 to Airport Road (Township Road 502)	75%
• Looma Road (Hay Lakes Trail) east of Range Road 232 from gravel to pavement transition for 750m	75%
• Range Road 232 from Looma Road (Hay Lakes Trail) to the north entrance of Rosewood Estates at 50054 Range Road 232	75%
• Range Road 233 from Highway 623 to Township Road 510	75%
• Range Road 234 north of Highway 623 through Rolly View for 700 metres	75%
• Range Road 234 north of Airport Road to the north entrance of Treasure Island Estates	75%
• Range Road 234 from Highway 625 to Township Road 510	75%
• Range Road 240 from the county boundary north to Highway 616	75%
• Range Road 240A south of Highway 623 to south entrance of Deer Crossing Estates	75%
• Township Road 505 from Range Road 234 to the City of Beaumont boundary	75%
• Township Road 500 from Highway 814 to Range Road 243	75%
• Range Road 243 from Township Road 500 to the south entrance of Sunnyville Estates	75%

## Order No. 181

### Defining the maximum allowable weights permitted on local roads

**Road Operations**  
101-1101 5 St., Nisku, AB T9E 2X3  
p: 780-979-6185 f: 780-955-7814  
PWE@leduc-county.com

• Range Road 244 south of Airport Road (Township Road 502) to the south entrance of Valleyview Estates	75%
• Range Road 244A through the South Vistas from Airport Road (Township Road 502) to Highway 625	75%
• Range Road 245 through the North Vistas from Highway 625 to Township Road 510	75%
• Range Road 250 from City of Leduc limit south to Township Road 492	75%
• Township Road 492 from Range Road 250 to Highway 2A	75%
• Highway 60 Service Roads north of Township Road 503	75%
• Township Road 480 from Highway 795 to Range Road 271	75%
• Range Road 12 from Highways 616 and 778 south to county boundary	75%
• Range Road 14 from 616X Road to Township Road 474/Lakeshore Drive	75%
• Township Road 474 from 616X Road west to Moonlight Bay	75%
• Township Road 474 from Range Road 15 west to 616X Road	75%
• Range Road 15 from Highway 622 to Township Road 502	75%
• Range Road 21 from Highway 622 south through Telfordville	75%
• Township Road 495A east through Telfordville to Highway 622	75%
• Township Road 485 east of Highway 770 for 800 metres	75%
Township Road 510 from Range Road 243 North to Range Road 244 North	90%
New Sarepta south access - From Highway 21 north to 2nd Street South	100%
All roads within Nisku Business Park	100%
All other local pavement surfaced roads	100%

#### Exemptions

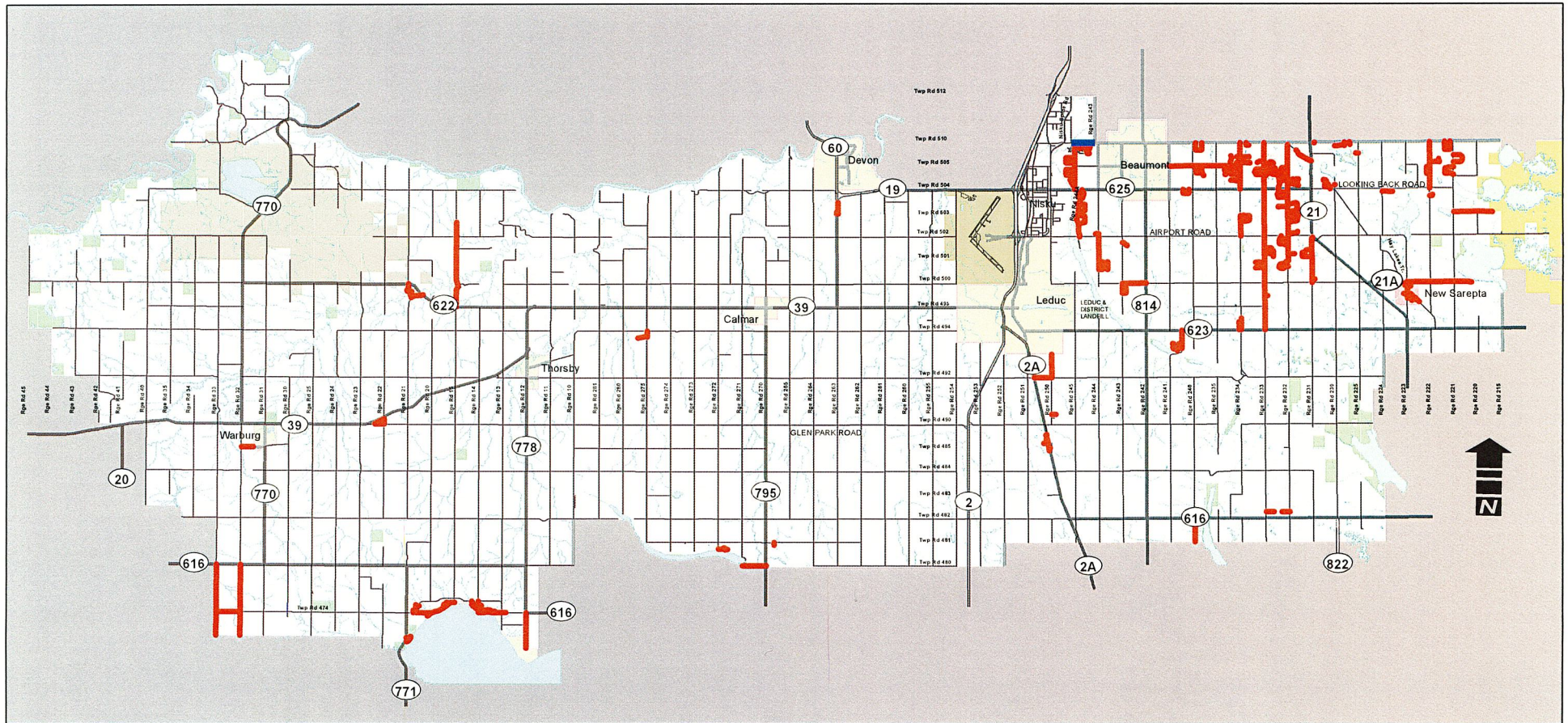
1. As outlined in Section 12, Traffic Safety Act - Commercial Vehicle Dimension and Weight Regulation, AR 315/2002
2. A vehicle required by the local authority to transport material that is required for emergency maintenance
3. A vehicle required by the local authority for snow/ice removal
4. A vehicle required for the transportation of equipment to a forest fire, flood, train derailment, pipeline spill or other emergency
5. Vehicles required for emergency water well drilling at the discretion of Director, Road Operations or their designate

This rescinds Order No. 180 and shall remain in effect until further notice.

Signed this 26th day of May, 2025.

  
\_\_\_\_\_  
County Manager, Duane Coleman





## 2025 ROAD BAN INFORMATION

Best efforts have been made to depict current Road Bans in Leduc County. Should any discrepancies be found, the Vehicle Axle Weight Order No. L.S. 181 shall take precedence.

### LEGEND

- 90% Weight Restriction
- 75% Weight Restriction