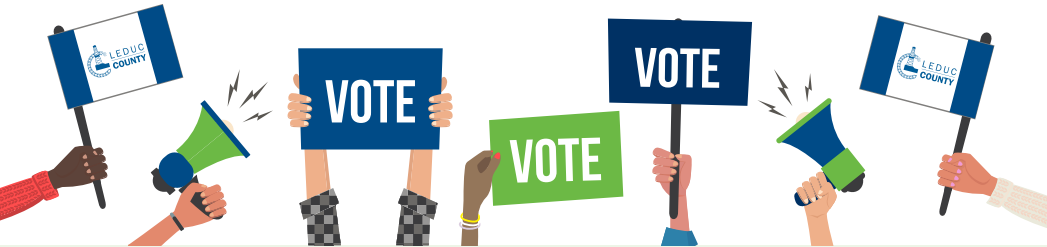


CONTACT US

leduc-county.com / leduccountybusiness.com / yoursayleduccounty.com

[f](#) [leduccounty](#) / [@leduccounty](#) / [in](#) [Leduc County](#)

If you no longer want to receive a printed copy of the County Chronicle newsletter, email us at communications@leduc-county.com.



ELECTION CONTACT

If you have any election-related questions, contact Lisa Brown, Returning Officer, at **780-770-9259** or legservices@leduc-county.com.

DEPARTMENT CONTACT INFORMATION

Agricultural Services

780-955-4593

Assessment and Land Management Services

780-955-6412

Corporate Services

780-770-9166

County Manager's Office

780-979-2389

Enforcement Services

780-955-5005

Engineering

780-979-6185

FCSS

780-979-2385

Finance

780-955-3555

Fire Services

780-955-7099

Parks and Recreation

780-955-6410

Planning and Development

780-979-2113

Road Operations

780-979-6185

Utilities

780-770-9040

After-hours road or water emergencies

780-955-7226

Return undeliverable items to:
101-1101 5 St.,
Nisku, AB T9E 2X3

phone: 780-955-3555
fax: 780-955-3444

PM40858010



SPECIAL EDITION

CHRONICLE



Municipal and school boards election



Leduc County Council Chamber

IN THIS ISSUE

Election Day

Mark your calendars!
Election day is
Monday, Oct. 20.

Special ballots

NEW this year, Leduc County is offering the opportunity to vote through special ballots. Learn more inside.

Voting stations

Learn where to vote on Election Day.

ELECTION 2025: PLAN TO VOTE ON OCT. 20

On Monday, Oct. 20, you can vote for a Leduc County councillor and local school board trustee.

- ▶ **Voting stations are open on Oct. 20 between 10 a.m. and 8 p.m.** See *page 4* for a voting station map.

Advance voting

If you cannot vote on election day (Oct. 20), you are invited to vote on one of our advance voting days:

- ▶ Saturday, Oct. 4 from 10 a.m. to 5 p.m.
- ▶ Wednesday, Oct. 8 from noon to 7 p.m.

You can vote at any of the below advance voting stations, regardless of where you live in the County:

- ▶ Coast Nisku Inn and Conference Centre (1101 4 Street, Nisku)
- ▶ New Sarepta Agriplex (5088 1 Avenue, New Sarepta)
- ▶ Thorsby Arctic Spas Recreation Complex (4901 48 Avenue, Thorsby)

Municipal election

Your vote in the municipal election on Oct. 20 will help shape the future of the County for the next four years.

On election day, voters in each of the seven electoral divisions elect a councillor to serve a four-year term. Voters do not elect a mayor; instead, councillors appoint a mayor from amongst themselves at the annual organizational meeting after the election.

Voters can only vote at the voting station(s) for their division on election day, but can vote at any advance voting station on advance voting days.

A list of candidates will be posted to leduc-county.com/election by Sept. 22, 2025.



VOTER ELIGIBILITY

You can vote in the Leduc County 2025 municipal election and school trustee elections if you:

- ▶ are 18 years old and older
- ▶ are a Canadian citizen
- ▶ are a resident of Alberta in Leduc County on election day (Oct. 20, 2025)

School trustee elections

Three school divisions are represented within Leduc County boundaries and are holding elections for board trustees:

- ▶ Black Gold Regional Schools
- ▶ Elk Island Catholic Schools
- ▶ St. Thomas Aquinas Roman Catholic Schools

Full details, including voting station locations, are on our website at leduc-county.com/election under 'Voter information.'

Special ballots

NEW for the 2025 election, Leduc County is offering residents an additional opportunity to vote through special ballots.

Eligible voters may vote by special ballot by completing and submitting Form 22 – Request for Special Ballot Package (available at leduc-county.com/election).

This method of voting is offered for eligible voters who:

- ▶ are absent from the local jurisdiction where they reside; or
 - ▶ are an elections officer, candidate, official agent or scrutineer who is at a voting station other than that for the elector's place of residence.
- Special ballot packages will be provided to eligible voters who meet all the requirements of sections 77.1 and 77.2 of the *Local Authorities Election Act*.
- ▶ may have a physical disability that impedes their ability to attend a voting station;

Continued on page 4



Municipal and school boards election

Special ballots *(continued from page 3)*

Special ballots must be received on or before 8 p.m. on Oct. 20, 2025.

Submitting special ballots

Applications may be submitted in person, by email or regular mail to Leduc County’s returning officer.

Ballots may be submitted:

- ▶ **in person** to the returning officer at County Centre prior to Oct. 20 during regular business hours

(Monday to Friday, 8:30 a.m. to noon and 1 to 4:30 p.m.);

- ▶ sent via **courier**; or
- ▶ **mailed*** to the attention of the returning officer at:
Leduc County
1101 5 St.
Nisku, AB T9E 2X3

**If there is a Canada Post strike, direct mail will not be an option.*

Rules of residence

Per section 48(1) of the *Local Authorities Election Act*, you can only vote in one jurisdiction, even if you have more than one residence.

A student who attends an educational institution within or outside of Alberta, temporarily rents accommodation for the purpose of attending an educational institution, and has family members who reside in Alberta and with whom the student ordinarily lives with when not attending an educational institution is deemed to reside with those family members. They would vote where those family members would vote.

For more information, please visit:

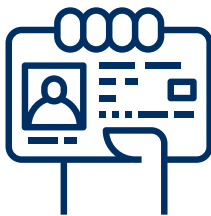
Page 38 — *Local Authorities Election Act* at open.alberta.ca/publications/121

Voter identification

When attending a voting station to vote, if:

- ▶ you **are** on the permanent electors register, you are required to provide one piece of identification issued by a Canadian government, whether federal, provincial or local, or an agency of that government, that contains your photograph and home address (*residential address/legal description*).
- ▶ you **are not** on the permanent electors register, you must make a statement you’re eligible to vote as an elector in the presence of an officer at the voting station, in the prescribed form (*Form 13*), and provide one piece of identification issued by a Canadian government, whether federal, provincial or local, or an agency of that government, including your photograph and home address.

If your photo ID doesn’t contain your home address, but has a box number, additional verification of your home address is required, such as a utility bill, tax/assessment notice, insurance policy, residential lease or mortgage statement or another document that shows your home address.



Election results

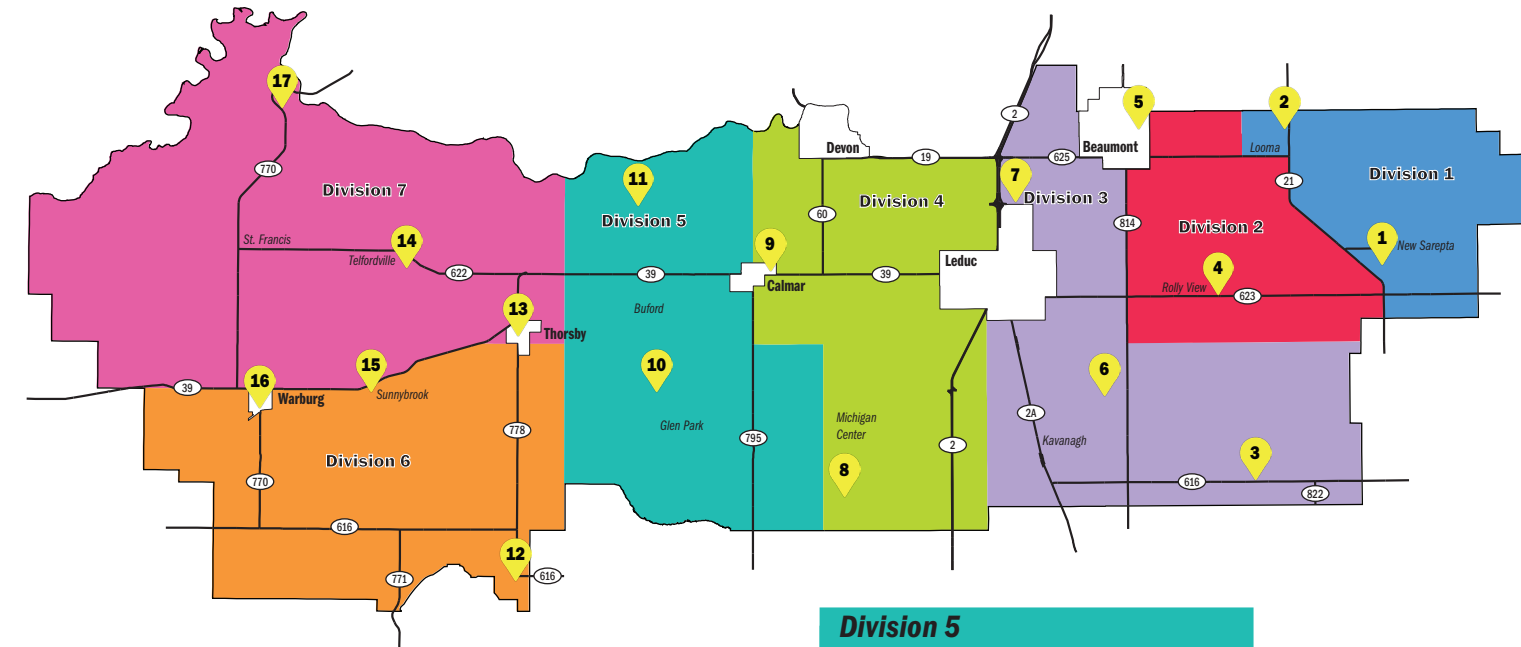
- ▶ Leduc County municipal election – leduc-county.com/election

School trustee elections

- ▶ Black Gold Regional Schools – blackgold.ca
- ▶ Elk Island Catholic Schools – eics.ab.ca
- ▶ St. Thomas Aquinas Roman Catholic Schools – starcatholic.ab.ca

VOTING STATIONS: 2025 MUNICIPAL AND SCHOOL BOARD ELECTIONS

The voting station map highlights the voting stations that will be open on **Oct. 20 from 10 a.m. to 8 p.m.** On Oct. 20, you can only vote in the division you live in. On election day, you will vote for a Leduc County councillor and school board trustee.



Division 7

11. Wilton Park Community Hall (27474 Township Road 502)
13. Thorsby Arctic Spas Recreation Complex (4901 48 Ave., Thorsby)
14. Telfordville Community Hail (170-2032 Highway 622)
15. Sunnybrook Community Hall (49019 Range Road 22)
16. Warburg Community Hall (5339 50 Ave, Warburg)
17. Genesee Community Hall (51020 Range Road 30)

Division 6

12. Sandholm Community Hall (47376 Range Road 12)
13. Thorsby Arctic Spas Recreation Complex (4901 48 Ave., Thorsby)
15. Sunnybrook Community Hall (49019 Range Road 22)
16. Warburg Community Hall (5339 50 Ave, Warburg)

Division 5

8. Telford Community Hall (48142 Range Road 262)
9. Calmar Legion (4815 47 Street, Calmar)
10. Glen Park Community Hall (49004 Range Road 274)
11. Wilton Park Community Hall (27474 Township Road 502)
13. Thorsby Arctic Spas Recreation Complex (4901 48 Ave., Thorsby)

Division 4

7. Coast Nisku Inn & Conference Centre (1101 4 Street, Nisku)
8. Telford Community Hall (48142 Range Road 262)
9. Calmar Legion (4815 47 Street, Calmar)

Division 3

3. Cloverlawn Community Hall (48203 Range Road 233)
4. Rolly View Community Hall (49402 Range Road 234)
5. Beaumont Community Centre (5204 50 Ave., Beaumont)
6. First Baptist Church (Glen Park Road and Range Road 243)
7. Coast Nisku Inn & Conference Centre (1101 4 Street, Nisku)



What division do I live in?

Find out what division you live in by using our online map, available at leduc-county.com/election.

Division 2

1. New Sarepta Agriplex (5088 1 Ave., New Sarepta)
2. Looma Community Hall (160 50516 Highway 21)
3. Cloverlawn Community Hall (48203 Range Road 233)
4. Rolly View Community Hall (49402 Range Road 234)
5. Beaumont Community Centre (5204 50 Ave., Beaumont)
6. First Baptist Church (Glen Park Road and Range Road 243)

Division 1

1. New Sarepta Agriplex (5088 1 Ave., New Sarepta)
2. Looma Community Hall (160 - 50516 Highway 21)
3. Cloverlawn Community Hall (48203 Range Road 233)
4. Rolly View Community Hall (49402 Range Road 234)