

Policy statement

Leduc County is committed to accessible, accountable government and effective communication. While the ability to make decisions rests with duly elected Council, Leduc County acknowledges that an engaged public and effective public participation can improve the quality of municipal decision-making.

This policy and supporting documents provide an overview of public participation at Leduc County and establish the foundation for effective and meaningful public participation processes.

Definitions

Public participation is any process that involves participants – external participants such as residents, business owners, agencies and community groups and/or internal participants such as staff – in problem solving or decision making and uses their input to make decisions.

Policy authority

Legislative implications:

- *Municipal Government Act (MGA), Section 216.1*
- *Public Participation Policy Regulation*

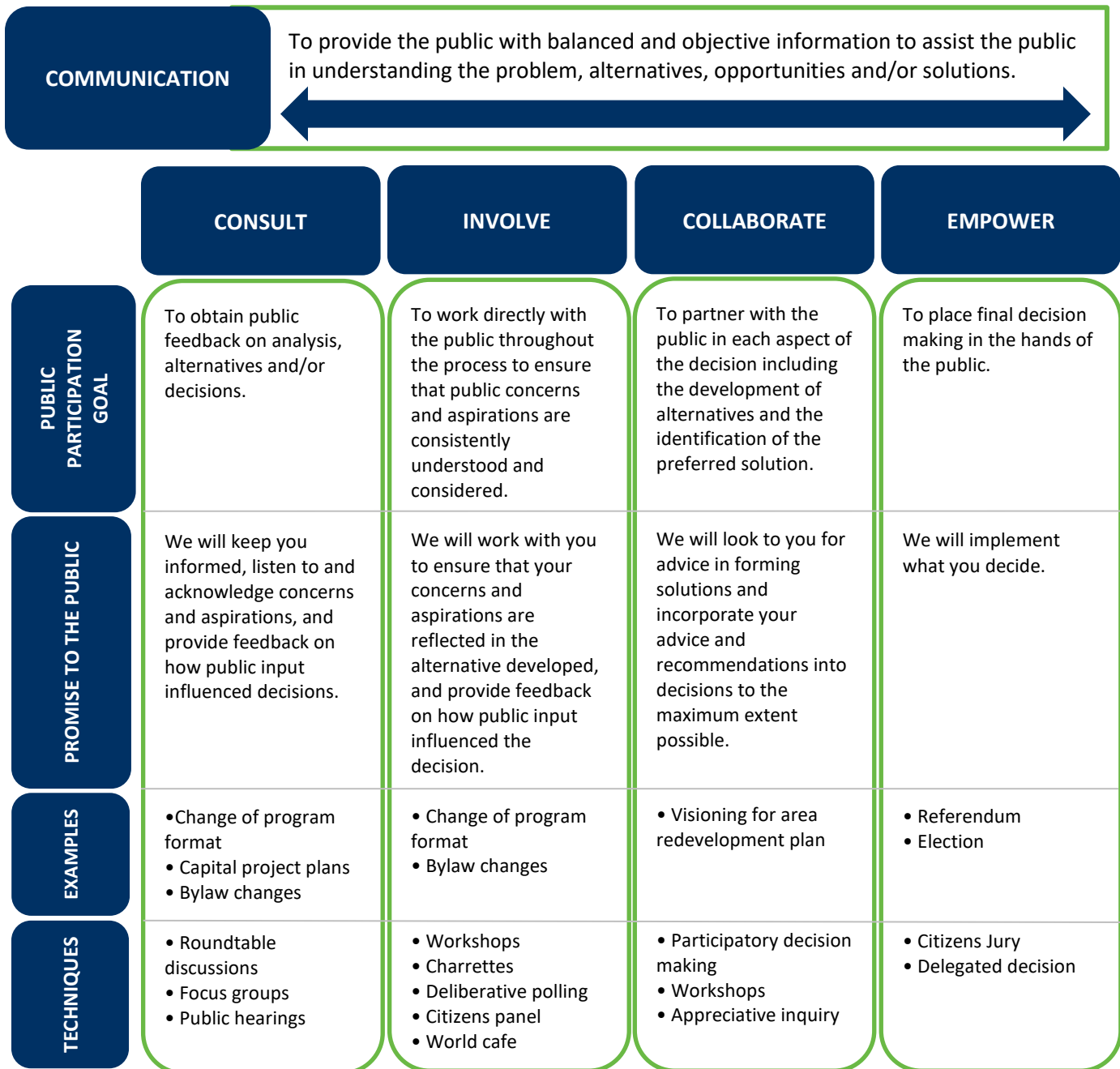
Policy standards

1. Leduc County supports the International Association of Public Participation’s (IAP2’s) core values for public participation, which are detailed below:
 - Public participation is based on the belief that those who are affected by a decision have a right to be involved in the decision-making process.
 - Public participation includes the promise that the public's contribution will influence the decision.
 - Public participation promotes sustainable decisions by recognizing and communicating the needs and interests of all participants, including decision makers.
 - Public participation seeks out and facilitates the involvement of those potentially affected by or interested in a decision.
 - Public participation seeks input from participants in designing how they participate.
 - Public participation provides participants with the information they need to participate in a meaningful way.
 - Public participation communicates to participants how their input affected the decision.

2. Leduc County considers public participation for all projects undertaken, in accordance with the public participation administrative directive, framework, guide and workbook. It will conduct public participation in the following circumstances:
 - Public participation is required by legislation,
 - public participation is directed by Council or administration; or
 - a project will impact the public and their input will influence the decision to be made.

<i>Approval date</i>	October 11, 2022	<i>Motion number</i>	240-22	<i>Page 1 of 3</i>
----------------------	-------------------------	----------------------	---------------	--------------------

3. Leduc County plans, implements and evaluates public participation in accordance with the public participation administrative directive, framework, guide and workbook. The County uses the following public participation spectrum to guide its approach to public participation:



Adapted from the International Association of Public Participation's Spectrum of Public Participation

4. Administration and Council consider the input obtained through public participation in decision-making, including recommendations.
5. The findings and outcomes of public participation are made available to participants and the public in a timely manner. This is often in the form of a what we heard report, which demonstrates transparency to the public, reaffirms our commitment to using public input in the manner we committed to, and provides decision makers with the information they need to make informed decisions.

Policy responsibilities

Council responsibilities:

Council will,

- Approve the Public Participation Policy.
- Help identify issues that may need public participation.
- Consider input obtained through public participation in decision-making.
- Promote and support public participation.

Administration responsibilities:

Administration will,

- Review this policy as required.
- Consider public participation for all projects undertaken for Leduc County.
- Help identify issues that may need public participation.
- Plan, implement and evaluate public participation in accordance with the public participation administrative directive, framework, guide and workbook.
- Consider input obtained through public participation in decision-making, including recommendations.
- Promote and support public participation.
- Report the public participation findings to Council, participants and the public.
- Communicate the outcomes of decisions to participants and the public.
- Create an administrative directive to support this policy.

Monitoring and updating

- This policy is posted on Leduc County’s website.
- This policy is reviewed at least once every four years.

<i>Approval date</i>	October 11, 2022	<i>Motion number</i>	240-22	<i>Page 3 of 3</i>
----------------------	-------------------------	----------------------	---------------	--------------------